



Health IT and Diagnostic Safety: *A Human Factors and Systems Engineering Perspective*

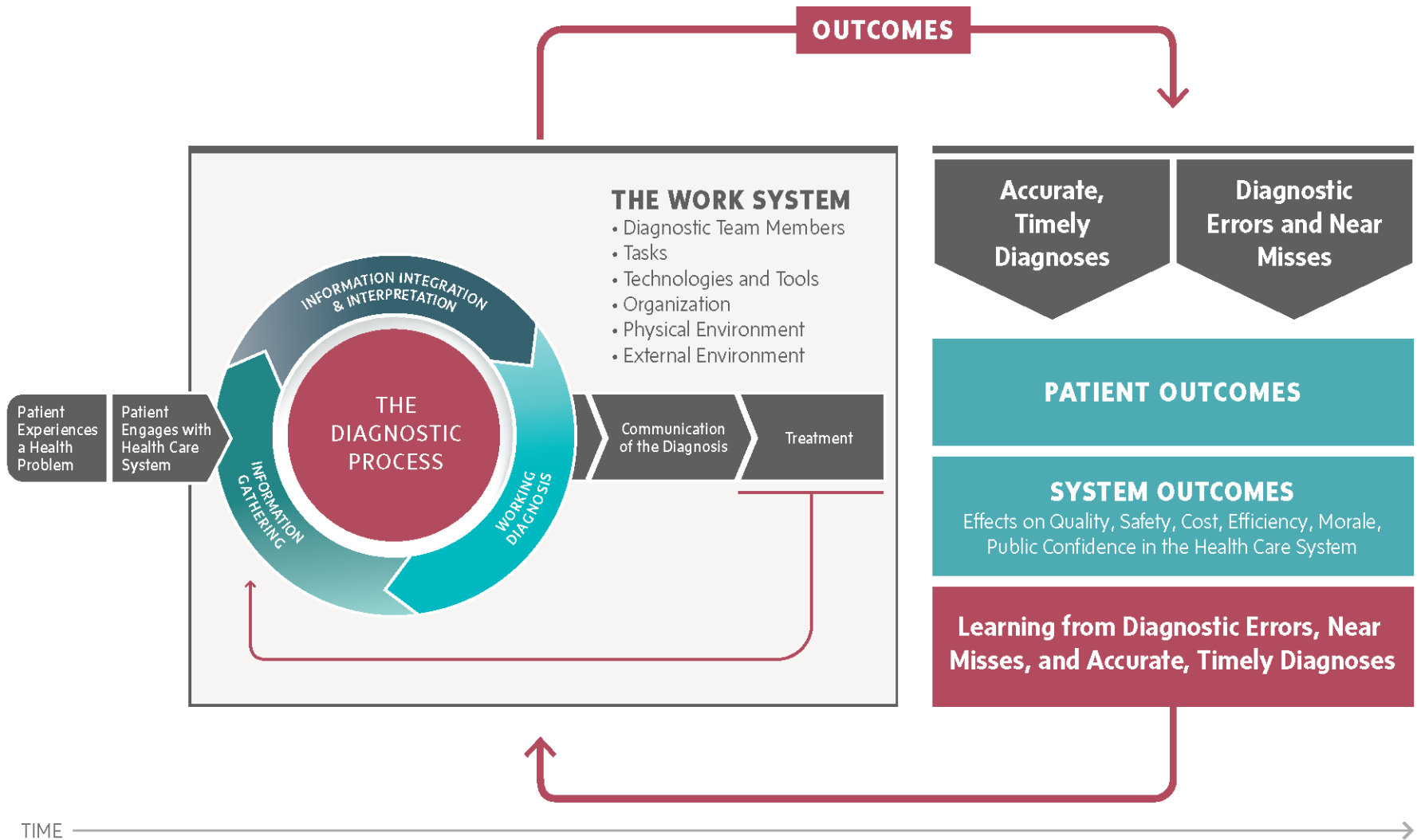
Pascale Carayon, Ph.D.

Procter & Gamble Bascom Professor in Total Quality,
Department of Industrial and Systems
Engineering Director, Center for Quality and Productivity
Improvement

University of Wisconsin-Madison



The Outcomes from the Diagnostic Process



(Balogh et al., 2015 - Improving Diagnosis in Health Care)

SEIPS Model of Work System and Patient Safety

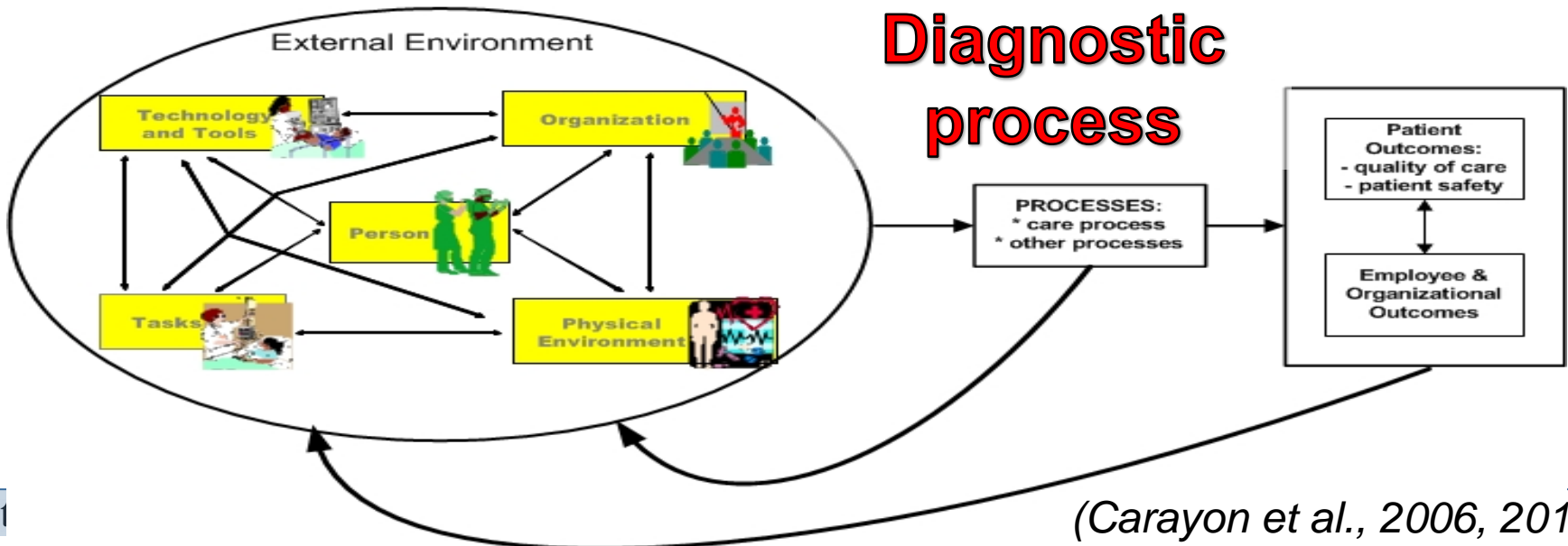
[SEIPS = Systems Engineering Initiative for Patient Safety]



Accurate and timely diagnosis
Impact on patients, healthcare professionals and HCOs

Human Factors Engineering (HFE)

- System from the viewpoint of person
- People have physical, cognitive and psychosocial needs
- Human-centered design



(Carayon et al., 2006, 2014)₃

Health IT-supported process for preventing and managing VTE

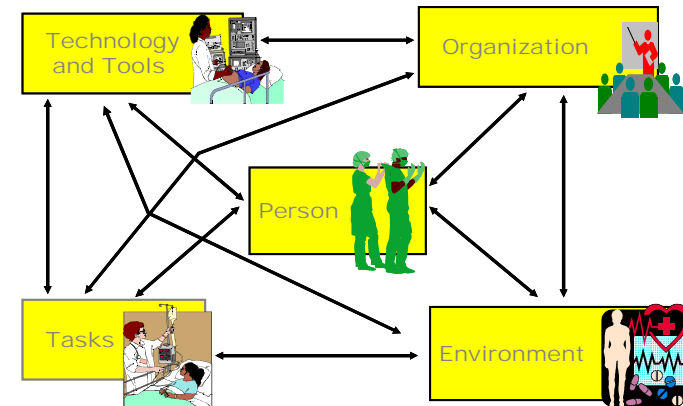
AHRQ Grant 1R01HS022086



Human-centered design

□ Analysis of cognitive and team work in VTE diagnosis in the ED

- *Diagnostic team members*
- *H&P, physical exam, ordering test*
- *EHR, access to pt information*
- *Physical environment*
- *Team interactions, roles*



- Primary data collection method on VTE diagnosis:
 - CDM (critical decision method) interviews (Klein et al., 1989)
 - Physicians, APP and nurses in 3 EDs

Developing Requirements of CDS for VTE Diagnosis in ED



1. Work (sociotechnical) system of VTE diagnosis
 - Role network analysis [info gathering, info integration & interpretation, working diagnosis]
2. Cues for VTE diagnosis
 - Table of cues
 - Comparative analysis of cues across 3 EDs and roles
3. Fit of cues in physician workflow, with focus on EHR (Patterson et al., 2016 – AMIA)

Health IT and Diagnostic Safety



- Diagnostic process = **embedded in work system** (Carayon et al., 2006, 2014; Balogh et al., 2015)
 - Health IT=one element of the work system
 - Fit of health IT within workflow and work system
- Diagnostic process = **information processing** (Parasuraman et al., 2000; Wickens et al., 1998; Balogh et al., 2015)
- Diagnostic process = **dynamic**
 - Occurs over time, multiple people-discipline-organizations

Health IT and Diagnostic Safety Research Questions



- Health IT for whom?
 - Who are the members of the diagnostic team?
 - What is their work and work system?
 - Distributed (virtual) team
 - Health IT for engaging patients in diagnostic process [mhealth, wearables, ...] – integration with clinical workflow
- Health IT for what?
 - Information gathering, information integration and interpretation, working diagnosis
 - Role of automation
 - Dynamic process
- Safety of health IT:
 - Human-centered design: usability and usefulness, cognitive workload
 - Safety = emergent phenomenon
 - Design-Implementation-Use-Design-Implementation-...